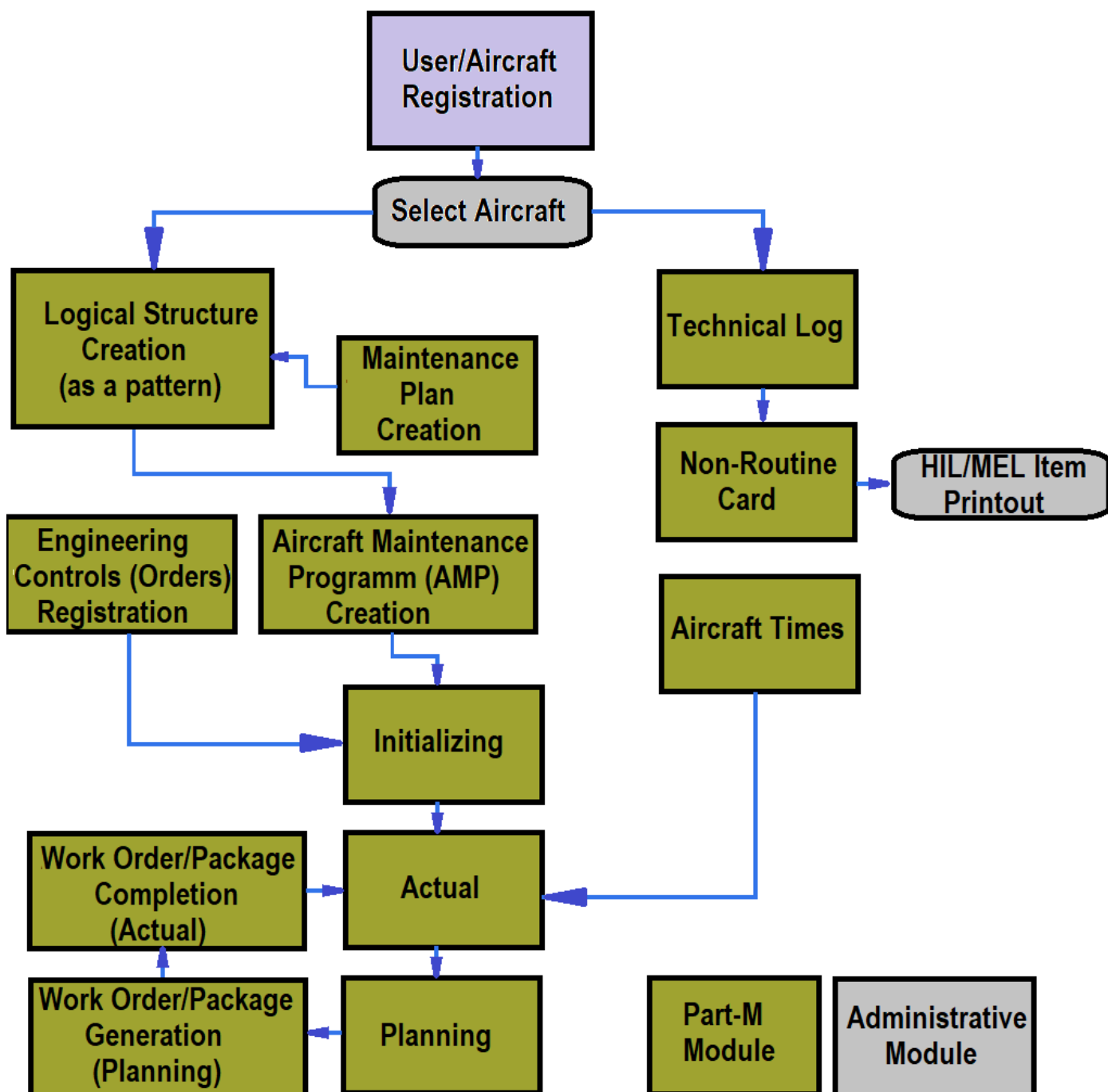


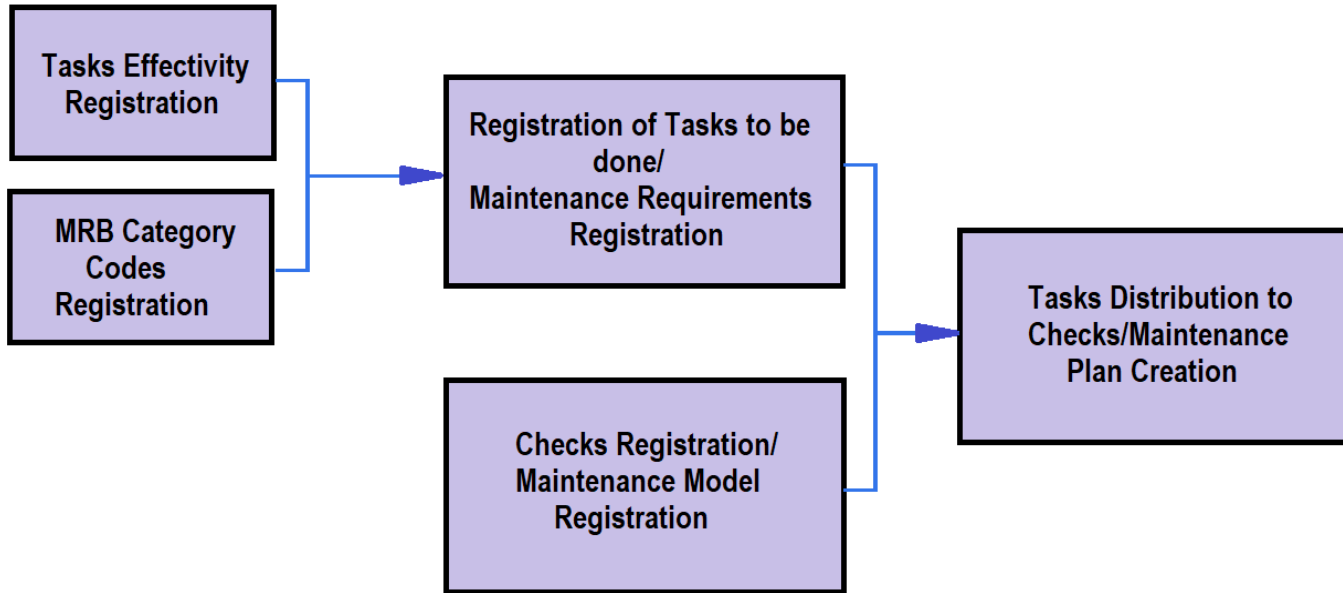
## **Contents**

1. Scenario 1: Part-M Operating Scheme.....	2
2. Scenario 2: Maintenance Plan Creation .....	3
3. Scenario 3: Logical Model Creation and its Transfer to Aircraft Maintenance Program.....	4
4. Scenario 4: Work Package Creation and Completion.....	5

# 1. Scenario 1: Part-M Operating Scheme



## 2. Scenario 2: Maintenance Plan Creation



1. Task Effectivity Registration: reference to the Maintenance Plan (chapter I, part 'Task Effectivity')

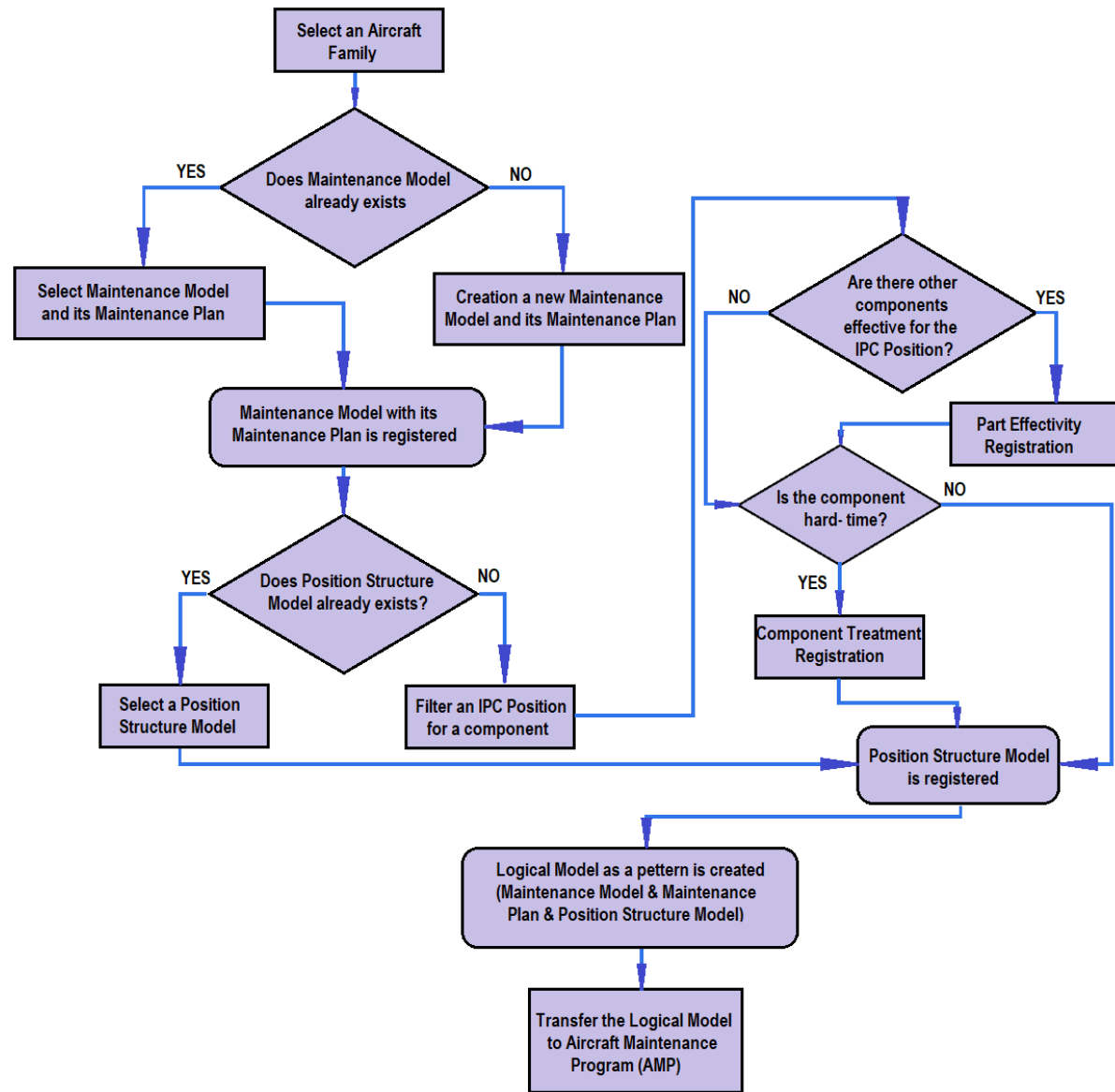
2. MRB Registration: reference to the Maintenance Plan (chapter I, part 'MRB Category Codes')

3. Maintenance Requirements Registration: reference to the Maintenance Plan (chapter I, part 'Maintenance Requirements')

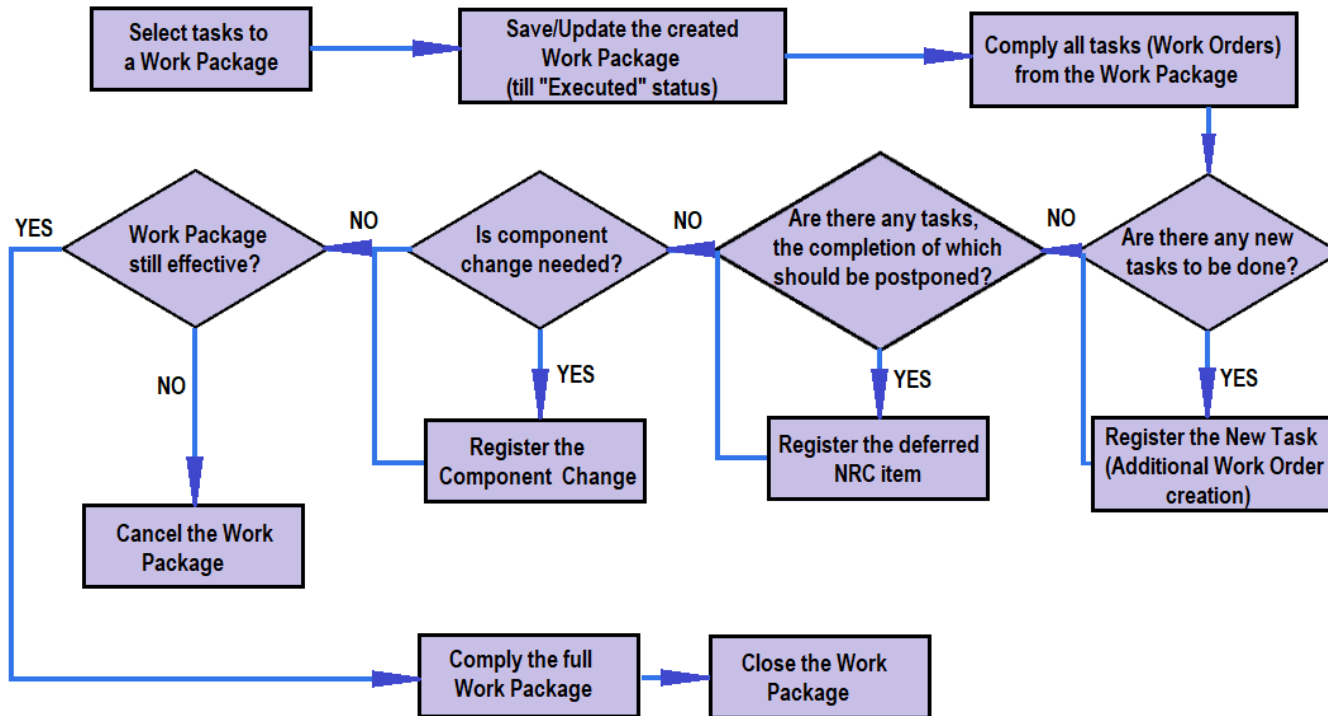
4. Checks Registrations: reference to the Maintenance Plan (chapter I, part 'Maintenance Model')

5. Tasks Distribution: reference to the Maintenance Plan (chapter I, part 'Maintenance Plan')

### 3. Scenario 3: Logical Model Creation and its Transfer to Aircraft Maintenance Program



## 4. Scenario 4: Work Package Creation and Completion



1. Select Tasks: reference to the Planning (chapter VIII, part 'Work Package Creation')

2. Save/ Update the WP: reference to the Planning (chapter VIII, part 'Work Package Creation')

3. Comply Tasks: reference to the Actual (chapter IX, part 'Actual Overview and Work Packages Completion')

4. New Task Registration: reference to the Actual (chapter IX, part 'Additional Work Order & Deferred Task Cards')

5. Deferred Task Registration: reference to the Actual (chapter IX, part 'Additional Work Order & Deferred Task Cards')

6. Cancel/ Comply/ Close the WP: reference to the Actual (chapter IX, part 'Actual Overview and Work Packages Completion')