

AC UTILIZATION LIST

User guidance

User Guidance

Contents

1. General Information..... 3

2. Aircraft Utilization 4

3. APU Utilization. 5

4. Engine Utilization. 6

User Guidance

1. General Information

The user's manual consists of 4 sections: General Information, Aircraft Utilization, APU Utilization and Engine Utilization.

Aircraft Utilization section provides step by step overview of the total hours and cycles calculation. If you performed maintenance procedure before flight, you can type all data of maintenance result in the special window.

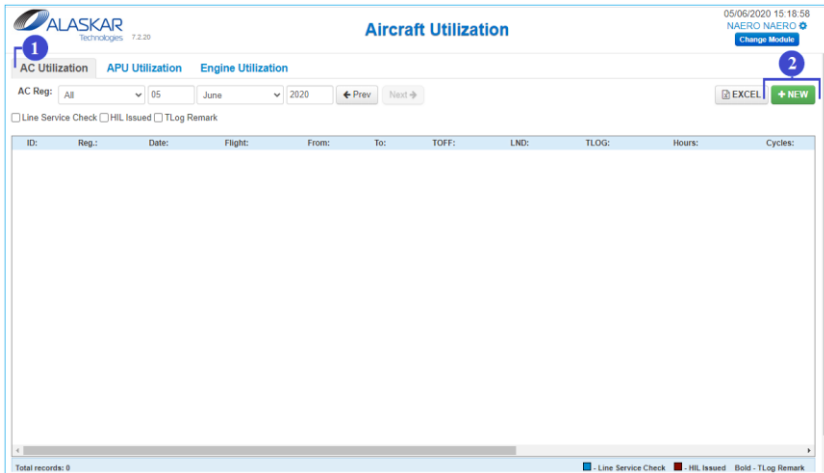
APU Utilization section allows to monitor total APU hours and total APU cycles.

Engine Utilization section allows to monitor Engine FH and Engine FC.

User Guidance

2. Aircraft Utilization

Aircraft Utilization section provides step by step overview of the total hours and cycles calculation. If you performed maintenance procedure before flight, you can type all data of maintenance result in the special window.

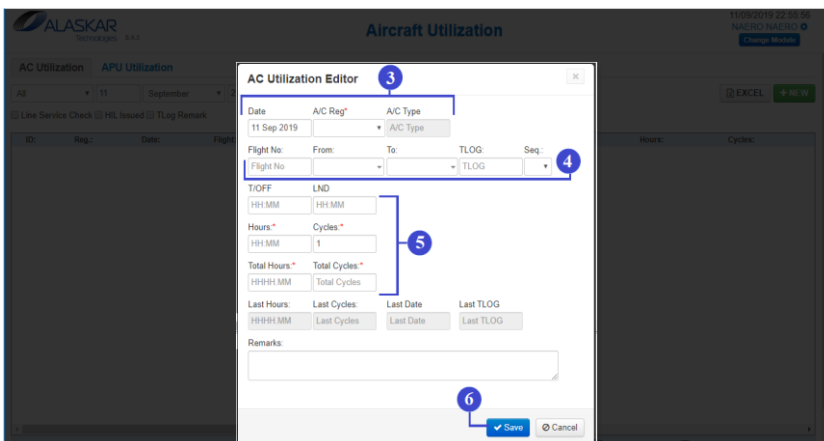


1. To open an Aircrafts Utilization Registration List, click on the “AC Utilization” button.

2. To open the AC Utilization Editor, click on the “NEW” button.

3. An Aircraft Editor will automatically generate a today’s date. If the edit date is not today, use the calendar to select the correct flight date of proper aircraft. Select aircraft registration. Aircraft type will appear automatically.

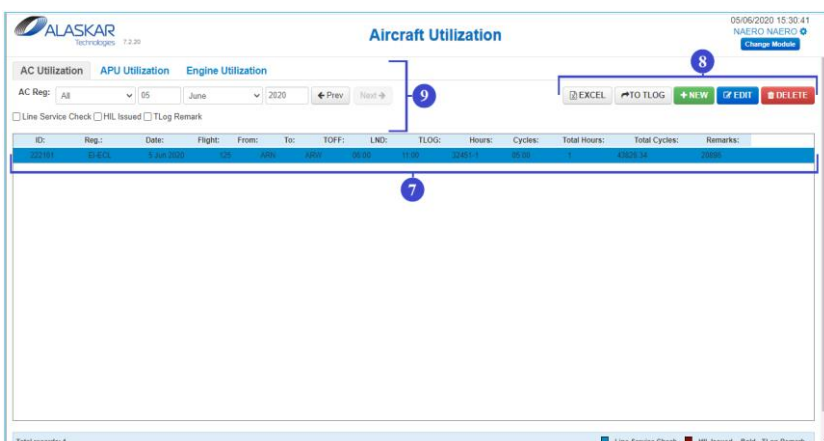
4. Write in Flight No/From/To fields and TLOG number.



5. Type the take-off time and landing time (UTC), then click on the ENTER button on your keyboard, and the system will calculate flight hours. Also, you can manual fill Hours field without calculation. Total hours and total cycles are calculated automatically. Last Hours and Last Cycles fields are refilled by the system automatically.

6. Click on the “Save” button to save entered data. “Cancel” is necessary to close window.

7. After saving the data you can monitor it in the initial Aircraft Utilization screen. Highlight the line and right upper tool bar will appear.



8. Excel button is necessary to transfer the data to excel. If you want to go to TLOG submodule, push on the “TO TLOG” button. To change save data, click on the EDIT, change data and save it. If you want to remove the line, click on the DELETE.

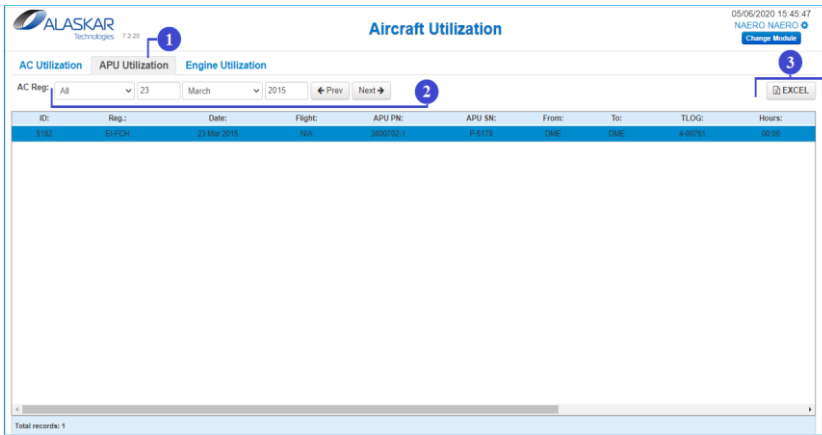
9. Use the filters such as “Line Service Check”, “HIL issued”, “TLOG Remarks” for quick search. Also, select Aircraft registration and date for comfort search.

NOTE: Fields with a reference marks (*) are mandatory to fill.

User Guidance

3. APU Utilization.

APU Utilization section allows to monitor total APU hours and total APU cycles.

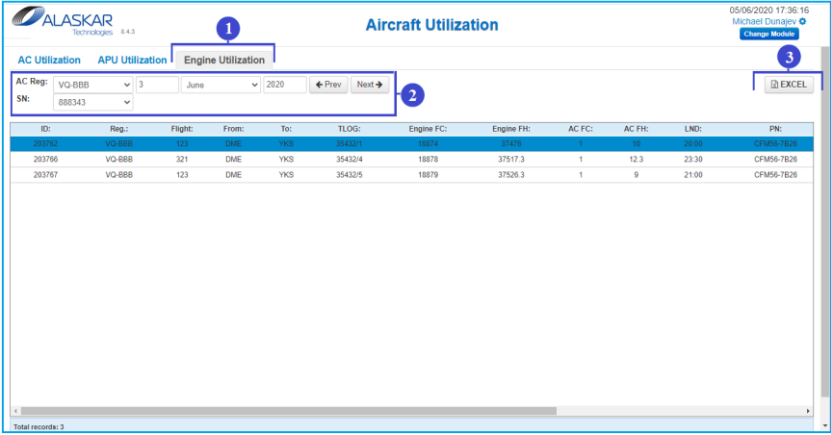


1. To open an APU Utilization Registration List, click on the “APU Utilization” button.
2. Use filters such as date or “Prev” button, or “Next” button for quick search.
3. To transfer data to excel, highlight the line and click on the Excel.

User Guidance

4. Engine Utilization.

Engine Utilization section allows to monitor Engine FH and Engine FC.



1. To open an Engine Utilization List, click on the “Engine Utilization” button.

2. Select aircraft registration, serial number of engine and correct date. Use filters such as date or “Prev” button, or “Next” button for quick search. You can see engine utilization information. This data is generated from AC Utilization. Last 4 columns are Engine FH (time since new), Engine FC (Cycle since new), AC FH (time in one flight) and AC FC.

3. To transfer data to excel, highlight the line and click on the Excel.